

# MASTERS OF BALAYAGE

## HAIR EXTENSIONS

### THE GAIA COLLECTION.

Premium balayage tape in hair extensions inspired by the mother goddess who presided over Earth, this majestic collection was born out of an idea to capture nature's true beauty.

With a focus on quality, sophistication and luxury, The Gaia Collection is the perfect extensions of your inner goddess.

- 100% cuticle intact Remy human hair.
- 2" tape-in panel for maximum fullness.
- Mess-free removal and reapplication. No need to shampoo in between reapplication!
- Create a Chemical Free Balayage.
- Thinnest and lightest tape-in extensions on the market.
- Lengths available in 12", 14" and 20". Each has an additional taper of 2" to create natural blends.



BEFORE  
TRANSFORMATION

PARTIAL  
VOLUME

FULL  
VOLUME

PARTIAL  
LENGTH

FULL  
LENGTH



BEFORE  
TRANSFORMATION

PARTIAL  
VOLUME

FULL  
VOLUME

PARTIAL  
LENGTH

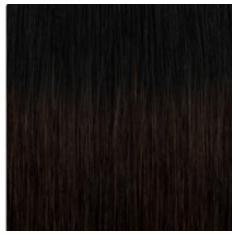
FULL  
LENGTH

# MASTERS OF BALAYAGE

HAIR EXTENSIONS



**B10NB | 10NB12N**  
PALE MOON



**B1N | 3N**  
MIDNIGHT VALLEY



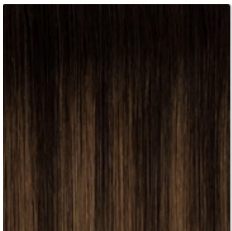
**B2N | 5N**  
DESERT SHADOW



**B4RB | 4RB8C10C**  
TWILIGHT



**B4N | 5N7GB**  
COPPER STORM



**B4N | 6N**  
NIGHTFALL



**B6C | 6G10CG**  
SUNLIT TRAIL



**B6N | 9N**  
GOLDEN PALMS



**B6N | 7NA11N**  
MYSTIC BEIGE



**B6N | 7NA11N**  
MYSTIC BEIGE



**B7NA | 12A**  
DUSTY QUARTZ



**B4N | 8N10N**  
MISTY MEADOW



**12N**  
MOON QUARTZ



**12G**  
DAISY FIELDS



**11N**  
PAMPAS MEADOW



**8N**  
DUSTY CITRINE



**5N**  
SMOKY QUARTZ



**4N**  
HEAVENLY NIGHT



**2N**  
ONYX



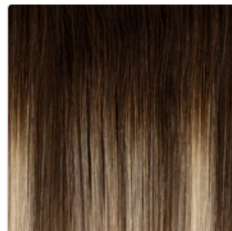
**B3N | 4RB**  
CANYON SUNSET



**B6N | 11G**  
SEA SALT



**B5N | 12N**  
CELESTIAL SANDS



**B6N | 11G**  
SEA SALT





Featured:  
Nightfall and  
Copper Storm





Featured:  
Counting Stars and  
Mystic Beige



# MASTERS OF BALAYAGE

## HAIR EXTENSIONS



### MOB TAPE IN EXTENSIONS

Masters of Balayage Tape In Hair Extensions are made with 100% Cuticle Intact Remy Human Hair. These reusable hair extensions can be used to add length, volume, chemical-free color, or to correct or enhance a haircut.

They come in a wide variety of salon inspired shades, and panels can be combined to create a custom color blend.

The unique panel construction is cross-stitched to prevent hair shedding, and it is weighted to hair replacement standards so application is gentle enough for even fine/thin hair.

Tape in extensions are fast and easy to apply, remove, and re-apply.

A full length transformation can be achieved in under 60 minutes.

Lengths: 12"-14", 16"-18", 20"-22" Each with an additional 2" tapered end for a seamless blend.

Contains: 12 2" Wefted Panels

Average Product Life: Two or More Applications When Maintained Correctly



# MASTERS OF BALAYAGE

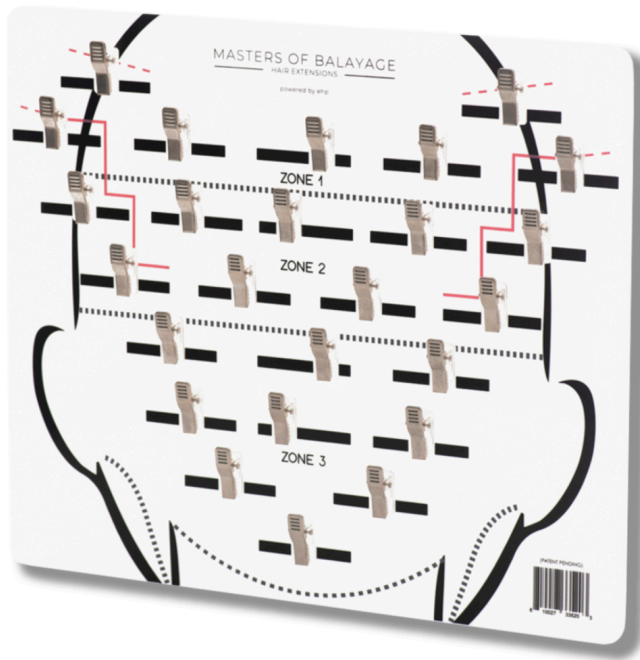
## HAIR EXTENSIONS



### MOB COLOR RING

The Masters of Balayage Color Ring allows you to get a quick visual overview of every beautifully crafted available Masters of Balayage Hair Extensions color. Made with 100% human hair, the color ring is designed to assist in the color matching and planning process.

When choosing the right color or combination of colors to apply, hold the color ring at the hair ends (not the root) in each zone.



### MOB PLACEMENT BOARD

The Master's of Balayage Placement Board is a must have tool for planning, organizing, and assisting in your extension application, removal, and re-application process. The built-in clips securely hold extension panels and allow you to visually see color and length placement before panels are applied to the head.

The Placement Board is sturdy, shatterproof, transparent and easy to clean.

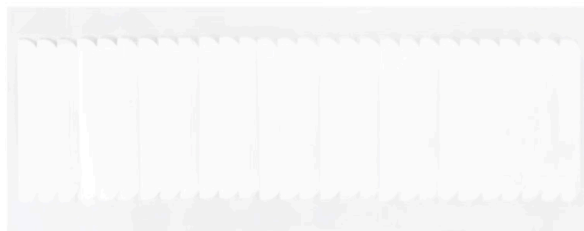
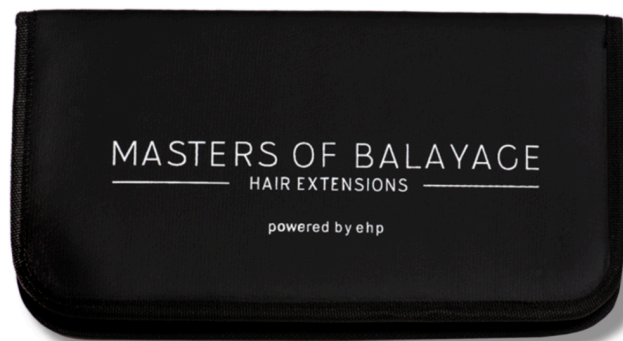
**Measurements:** 13.25"x 11.25" (h X w).

Add Hair Placement Board Mirror Attachments (sold separately) to attach the Placement Board to your station mirror, or any non-porous surface.



# MASTERS OF BALAYAGE

## HAIR EXTENSIONS



### PLACEMENT BOARD ATTACHMENTS

Easily secure the Masters of Balayage Placement Board to any non-porous surface with these easy to apply attachments. These mirror attachments come four to a pack, designed to be attached to each corner of the Placement Board.

Each attachment features a double suction cup design, attach by simply pressing down, once all 4 corners are attached to the board, simply press against the surface you wish to attach it to securely hold in place.

### ELIMINATOR SHEARS

Masters of Balayage Eliminator Shears were developed to take the fear out of cutting hair extensions. The unique design of the blades features a double sided construction which removes the perfect amount of hair with each cut, unlike traditional texturizing shears which can remove too much hair or leave hard harsh lines in the hair.

The serrated blade creates a soft edge when blending, and a perfect vortex when cutting at an angle. These shears give stylists control and confidence when cutting hair extensions. Available in both right-handed and left-handed options.

### MOB REPLACEMENT TAPE

Masters of Balayage Replacement Tape is a completely vegan, hypo allergenic, latex-free must have tool for re-taping Masters of Balayage extensions, or to correct mistakes made during application. The transparent backing acts as a window allowing you to view the panel and tape clearly as you perfectly position new tape onto the panel.

**Quantity:** 56 pieces of MOB Hair Extension Replacement Tape

# MASTERS OF BALAYAGE

## HAIR EXTENSIONS



### CLEAN PANEL REMOVER 4OZ

Clean is a medical grade, alcohol-based remover used to gently release Masters of Balayage Hair Extensions panels and residue. Clean can also be used to easily correct any mistakes made during application.

To release a panel, thoroughly saturate by spraying Clean directly on and in-between hair extension panels. If met with any resistance, spray Clean until you can remove the panel safely and painlessly. Once the panel is removed, spray Clean from hair root to ends and use a fine tooth comb to gently break up remaining residue until it is loose enough to comb out or pull off with a towel. Repeat as necessary.



### PURIFY CLARIFYING SHAMPOO

Purify Clarifying Shampoo is a gentle yet effective shampoo designed to prepare hair for a secure tape in extension service by removing silicones, oils, and buildup from the hair.

Purify Clarifying Shampoo also removes styling product buildup and harsh daily pollutants. It can be used weekly to restore hair manageability in the salon or at home.

Available in 32oz backbar and 8.5oz retail.



# MASTERS OF BALAYAGE

## HAIR EXTENSIONS

*past. present. future*  
CUSTOMIZED GUEST PORTFOLIO

NAME \_\_\_\_\_ PHONE \_\_\_\_\_  
ADDRESS \_\_\_\_\_ EMAIL \_\_\_\_\_

*lifestyle analysis*  
(CIRCLE ALL THAT APPLY)

YOUR DESIRED STYLE	Classic	Modern	Trendy	Natural
HAIR GOALS	Change with the seasons	Subtle change once a year	Have a major change in kind	Love to change every visit
STYLING TIME SPENT AT HOME	Less than 15 min.	15 - 30 min.	30 - 45 min.	More than 45 min.
VERSATILITY	Wear my hair the same everyday	Occasionally wear (to look differently everyday, etc.)	Open to new styles and change often	By a new look immediately the day
HOW YOU TYPICALLY STYLE YOUR HAIR	All day or lightly diffuse	Blow-dry with a flat brush	Blow-dry with a round brush	Blow-dry with a brush and use hot tool
STYLING COMFORT LEVEL	Uncomfortable I need a start to finish wash/rinse	Comfortable I need tips/help on wash/rinse	Very Comfortable I can style my hair with ease, open to new techniques.	

*I AM MOST CHALLENGED/CONCERNED WITH*  
(CHECK ALL THAT APPLY)

<input type="checkbox"/> repairing damage	<input type="checkbox"/> thinning hair	<input type="checkbox"/> smoothing frizz
<input type="checkbox"/> adding moisture	<input type="checkbox"/> adding fullness	<input type="checkbox"/> straightening
<input type="checkbox"/> preserving color	<input type="checkbox"/> hair loss	<input type="checkbox"/> enhancing cut
<input type="checkbox"/> corrective cut	<input type="checkbox"/> enhancing volume	<input type="checkbox"/> styling
<input type="checkbox"/> enhancing/ corrective color	<input type="checkbox"/> creating length	<input type="checkbox"/> blow-dry
	<input type="checkbox"/> coverage	<input type="checkbox"/> other

*WHAT IS PERFECT HAIR FOR YOU?*  
If you could have your hair look, act and feel any way you wanted, describe exactly how you would want your hair to look, act and feel.

*HOW MANY GOOD HAIR DAYS DO YOU HAVE PER MONTH?* 1-7 8-15 16-22 23+

VOLUME On a scale of 1 to 10 (1 being the thinnest, 10 being the thickest) 1 2 3 4 5 6 7 8 9 10 Desired \_\_\_\_\_

LENGTH On a scale of 1 to 10 (1 being the most cut-off, 10 being the most full length) 1 2 3 4 5 6 7 8 9 10 Desired \_\_\_\_\_

COLOR On a scale of 1 to 10 (1 being the lightest, 10 being the darkest) 1 2 3 4 5 6 7 8 9 10 Desired \_\_\_\_\_

PROFESSIONAL RECOMMENDATION

MASTERS OF BALAYAGE  
HAIR EXTENSIONS  
powered by ehp

### MOB CONSULTATION PAD (50)

The Masters of Balayage Consultation Pad is the ultimate conversion tool for getting your clients to tell you what you already suspect is true; thicker fuller hair today.

Each section is designed to gather the most useful information about your client's hair. By identifying where they are now, where they want to be, and by when, you will not only ensure their expectations are met but deliver the service that will have your client absolutely in love with their hair.

QUANTITY: 50 MOB CONSULTATION PADS

MASTERS OF BALAYAGE  
HAIR EXTENSIONS  
powered by ehp

Your estimated maintenance investment \$ \_\_\_\_\_

Next appointment date: \_\_\_\_\_ at: \_\_\_\_\_

Stylist Name: \_\_\_\_\_

Follow me @ \_\_\_\_\_

Salon: \_\_\_\_\_

Phone #: \_\_\_\_\_

*tape in hair care*

Pre-book your extension follow up and maintenance no later than 6 weeks after your initial application.

S.S.S = Stop, Snap & Send  
In the event you experience any challenges, please, stop assess the situation. Snap a picture or capture a video and send to your salon or stylist.

*immediate care*

Do not shampoo, wet hair or exercise to the point of perspiration for 48 hours after application, as the bond needs adequate time to cure. No exceptions.

### MOB HOME CARE 101 CARDS (25)

Masters of Balayage Home Care 101 Card is a convenient and useful resource your clients will appreciate.

Each card contains valuable home care instructions, tips, and tricks, and serves as an appointment reminder for their next salon visit. Send each of your extension clients home with the Home Care 101 Card as part of a complete extension salon service.

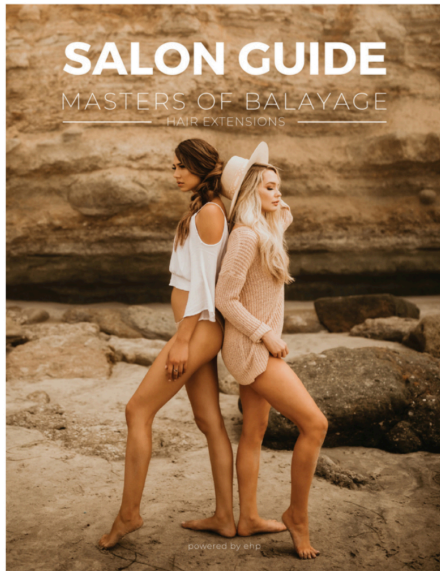
**Quantity:** 25 Home Care 101 Cards

# MASTERS OF BALAYAGE

---

## HAIR EXTENSIONS

---



### MOB SALON GUIDE

includes:

- The Looks Pricing Strategy
- Frequently Asked Questions
- The Gaia Collection Colors
- Extensions Care 101
- Approved Products to Use
- Client Consultation Agreement
- Trouble Shooting



### MOB EDUCATIONAL MANUAL

The Masters of Balayage Education Manual is the ultimate resource for learning everything Tape In Extensions.

This tool provides an overview of all the knowledge in our valuable education videos to support you in the entire process of providing a transformative service.



### MOB LOOK BOOK

The Masters of Balayage Look Book is designed to give your client a visual example of each extension look offered. The Look Book allows your clients to choose the look that most represents how they want to see their hair.

By showing your client the Look Book, you can openly discuss what they love about the look and gain clarity before offering your professional recommendation to give your client the hair of their dreams.